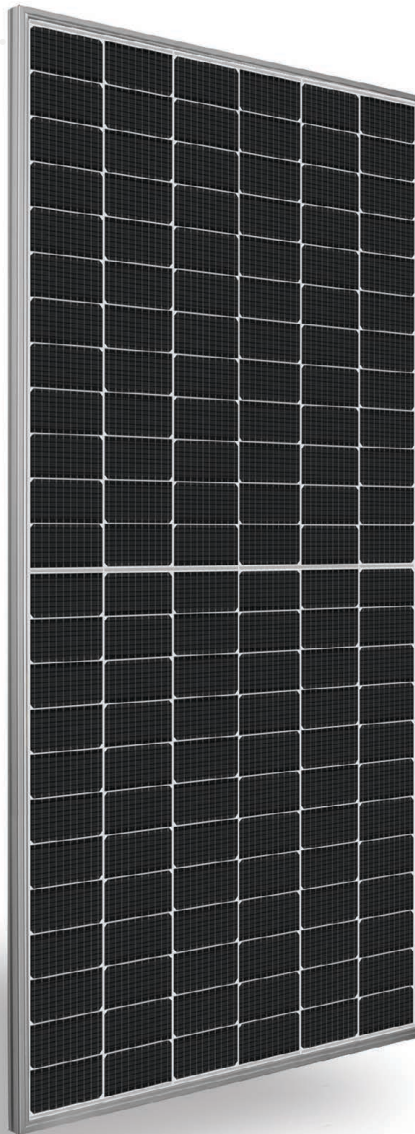


**SILFAB**  
COMMERCIAL **NTC**

**SILFAB**  
SOLAR®

SIL-580 XM+  
BIFACIAL



## • NEXT-GENERATION N-TYPE CELL TECHNOLOGY

**Manufactured exclusively in the USA.**

- Improved Shade Tolerance
- Improved Low-Light Performance
- Increased Performance in High Temperatures
- Efficient Bifacial Energy Yield
- Enhanced Durability
- Reduced Degradation Rate
- 25-Year Product Warranty/  
30-Year Performance Warranty



[SILFABSOLAR.COM](http://SILFABSOLAR.COM)



ELECTRICAL SPECIFICATIONS		580		
Test Conditions		STC	BSTC	NOCT
Module Power (Pmax)	Wp	580	632.8	428.2
Maximum power voltage (Vpmax)	V	44.27	44.27	40.73
Maximum power current (Ipmax)	A	13.10	14.29	10.51
Open circuit voltage (Voc)	V	52.27	52.32	48.08
Short circuit current (Isc)	A	13.85	15.11	11.12
Module efficiency	%	22.4%		
Maximum system voltage (VDC)	V		1500	
Series fuse rating	A		30	
Power Tolerance	Wp		0 to +10	
Bifaciality Factor	%		80±5	

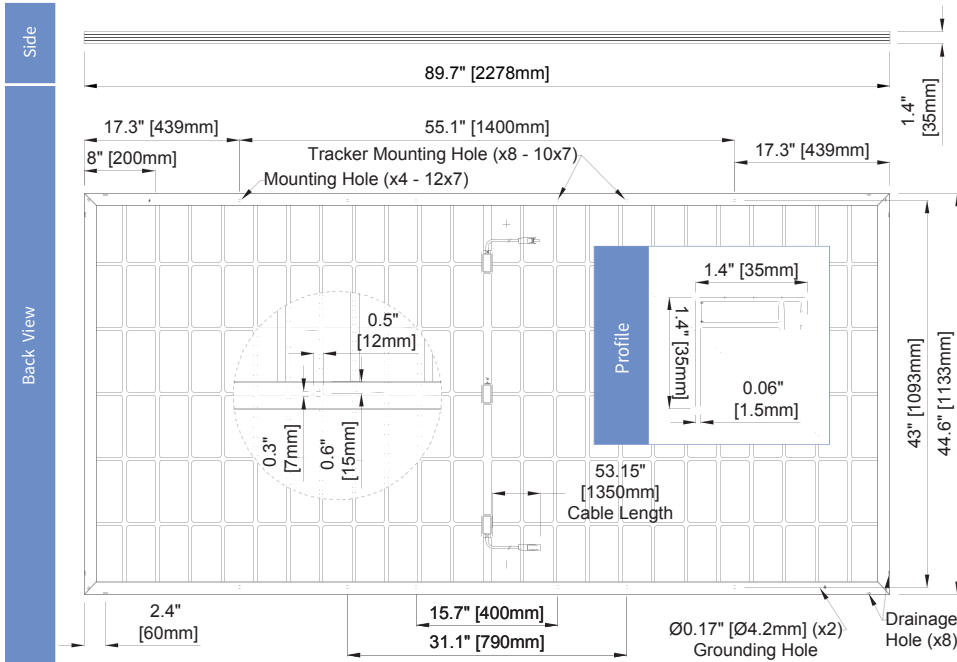
Performance conditions: Measurement tolerance  $\leq 3\%$  • Standard Test Conditions (STC): 1000 W/m<sup>2</sup>, AM 1.5, Temperature 25 °C • Nominal Operating Cell Temperature (NOCT): 800 W/m<sup>2</sup>, AM 1.5 • Bifacial Standard Test Conditions (BSTC): 1000 W/m<sup>2</sup> +  $\phi \times 135$  W/m<sup>2</sup>,  $\phi = 80\%$ , AM 1.5 • Electrical characteristics may vary by  $\pm 5\%$ .

MECHANICAL PROPERTIES / COMPONENTS	METRIC	IMPERIAL
Module weight	28.5 kg $\pm 0.2$ kg	62.8 lbs $\pm 0.4$ lbs
Dimensions (H x L x D)	2278 mm x 1133 mm x 35 mm	89.7 in x 44.6 in x 1.4 in
Maximum surface load (wind/snow)*	2400 Pa rear load / 5400 Pa front load	50.1 lb/ft <sup>2</sup> rear load / 112.8 lb/ft <sup>2</sup> front load
Hail impact resistance	$\phi$ 25 mm at 83 km/h	$\phi$ 1 in at 51.6 mph
Cells	144 Half cells - N-Type Silicon solar cell 182 mm x 91 mm	144 Half cells - N-Type Silicon solar cell 7.16 in x 3.58 in
Glass	3.2 mm high transmittance, tempered, anti-reflective coating	0.126 in high transmittance, tempered, anti-reflective coating
Cables and connectors (refer to installation manual)	1350 mm, $\phi$ 5.7 mm, EVO2 from Staubli	53.1 in, $\phi$ 0.22 in (12 AWG), EVO2 from Staubli
Backsheet	High durability, superior hydrolysis and UV resistance, multi-layer dielectric film, transparent PV backsheet	
Frame	Anodized Aluminum (Silver)	
Junction Box	UL 3730 Certified, IEC 62790 Certified, IP68 rated, 3 diodes	

TEMPERATURE RATINGS		WARRANTIES	
Temperature Coefficient Isc	0.04 %/°C	Module product workmanship warranty	25 years**
Temperature Coefficient Voc	-0.24 %/°C	Linear power performance guarantee	30 years
Temperature Coefficient Pmax	-0.29 %/°C		$\geq 98\%$ end 1st yr $\geq 94.7\%$ end 12th yr $\geq 90.8\%$ end 25th yr $\geq 89.3\%$ end 30th yr
NOCT ( $\pm 2^\circ\text{C}$ )	45 °C		
Operating temperature	-40/+85 °C		

CERTIFICATIONS		SHIPPING SPECS	
Product	UL 61215, UL 61730, CSA C22.2#61730, IEC 61215, IEC 61730, IEC 61701 (Salt Mist Corrosion), IEC 62716 (Ammonia Corrosion), CEC Listing, UL Fire Rating: Type 1	Modules Per Pallet:	29
Factory	ISO9001:2015	California (Pallets per load)	21
		Others (Pallets per load)	22

- \* **▲** Warning. Read the Safety and Installation Manual for mounting specifications and before handling, installing and operating modules.
- \*\* 12 year extendable to 25 years subject to registration and conditions outlined under "Warranty" at [silfabsolar.com](http://silfabsolar.com). PAN files generated from 3rd party performance data are available for download at: [silfabsolar.com/downloads](http://silfabsolar.com/downloads).
- \*\*\* Certification and CEC listing in progress.



## SILFAB SOLAR INC.

1770 Port Drive  
Burlington WA 98233 USA  
T +1 360.569.4733  
info@silfabsolar.com  
[SILFABSOLAR.COM](http://SILFABSOLAR.COM)

7149 Logistics Lane  
Fort Mill SC 29715 USA  
T +1 839.400.4338

240 Courtneypark Drive East  
Mississauga ON L5T 2S5 Canada  
T +1 905.255.2501  
F +1 905.696.0267

**Silfab - SIL-580-XM+-BIFACIAL 20241211**  
No reproduction of any kind is allowed without permission. Data and information is subject to modifications without notice. © Silfab Solar Inc., 2024. Silfab Solar® is a registered trademark of Silfab Solar Inc.