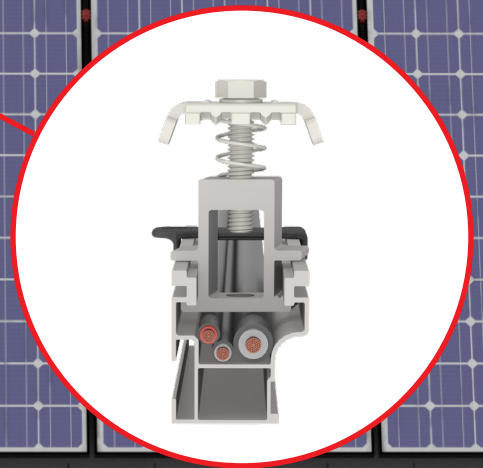
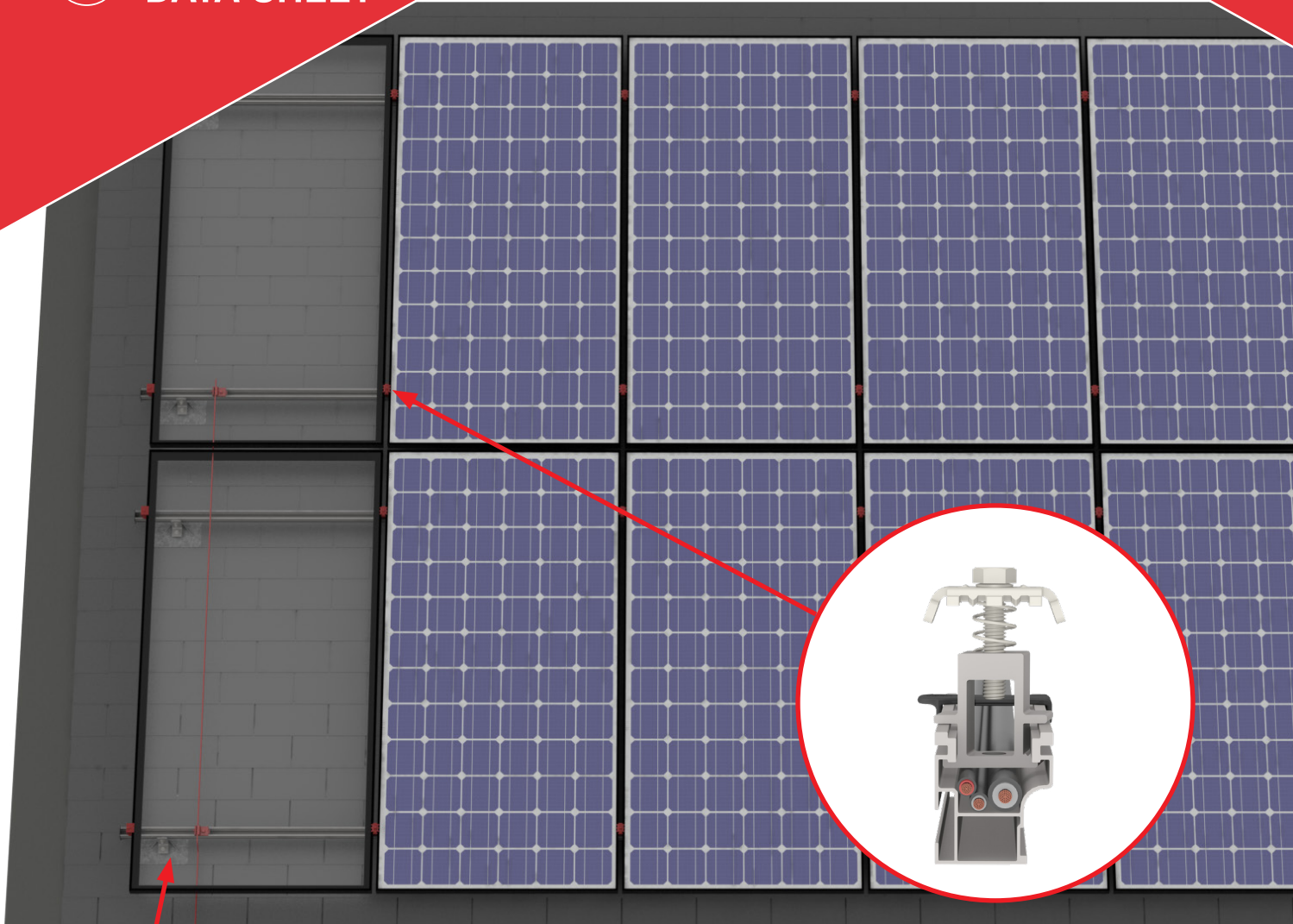


CrossRail System

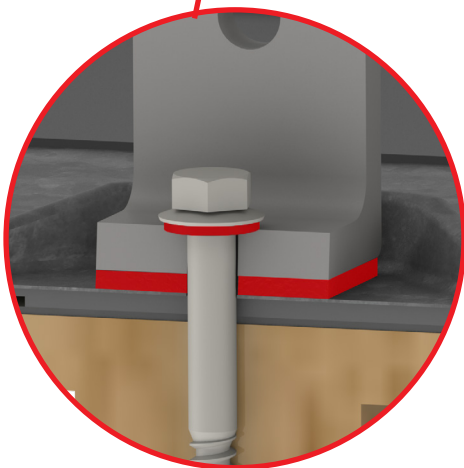


DATA SHEET



In-Rail Wire Management

- / 4 open channel rail types available
- / Wires help with clamps and wire management clips
- / 3 clip types available



K2 Flash Comp Kit Waterproofing

- / Water Shield redirects water away from penetration
- / K2 EverSeal preassembled on L-Foot
- / EPDM backed sealing washer on lag screw

PRODUCT FEATURES

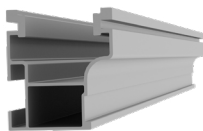


- / High quality, German-engineered system for residential and commercial installations
- / 4 rail sizes available to suit all structural conditions
- / Universal components for all rail types
- / Use 2 innovative components to turn this system into Shared Rail or Tilt Up
- / MK3 technology provides highest rail engagement
- / Roof attachments for all roof types
- / 100% code compliant, structural validation for all solar states
- / Fast installation with minimal component count result in low total installed cost

TECHNICAL DATA

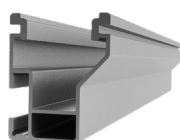
	CrossRail System
Roof Type	Composition shingle, tile, standing seam, corrugated metal, trapezoidal metal
Material	High corrosion resistance stainless steel and high grade aluminum
Flexibility	Modular construction, suitable for any system size, height adjustable
PV Modules	For all common module types
Module Orientation	Portrait and landscape
Roof Connection	Rafter or deck connection depending on selected roof attachment
Structural Validity	IBC compliant, stamped engineering letters available for all solar states
Certifications	UL 2703, ASCE 7-16, Class A Fire Rating
Warranty	25 years

Components



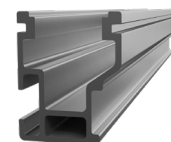
CrossRail 44-X

Part Number	Description
4000019	CrossRail 44-X, 166", Mill
4000020	CrossRail 44-X, 166", Dark
4000021	CrossRail 44-X, 180", Mill
4000022	CrossRail 44-X, 180", Dark



CrossRail 48-X

Part Number	Description
4000662	CrossRail 48-X, 166", Mill
4000663	CrossRail 48-X, 166", Dark



CrossRail 48-XL

Part Number	Description
4000695	CrossRail 48-XL, 166", Mill
4000705	CrossRail 48-XL, 166", Dark



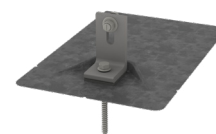
CrossRail 80

Part Number	Description
4000508	CrossRail 80 168" Rail Mill



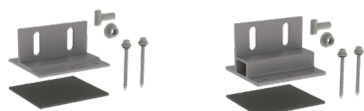
L-Foot & T-Foot

Part Number	Description
4000630	L-Foot Slotted Set, Mill
4000631	L-Foot Slotted Set, Dark
4000080	T-Foot X 6" Kit, Mill
4000218	Big Foot 6" w/3" + Chem Link Clip Kit



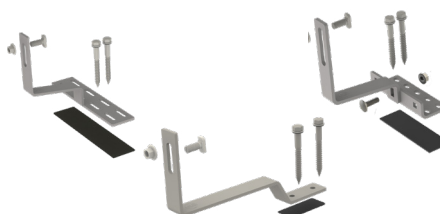
K2 Metal Flashings

Part Number	Description
4000156	K2 Flash Comp Kit, Mill
4000157	K2 Flash Comp Kit, Dark



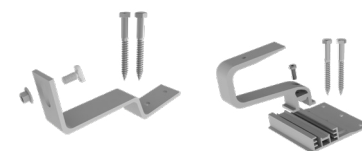
Splice Foot X & XL

Part Number	Description
4000131	Splice Foot X, Set, Mill
4000162	Splice Foot XL, Set, Mill
4000115	Splice Foot Screw, m5x60



EverSeal Tile Hooks

Part Number	Description
4000140-B	USH, 9", Bake Kit, w/Butyl
4000141-B	Flat Tile Hook X Kit, w/Butyl
4000142-B	USH +2, 5.5" Base Kit, w/Butyl



Standard Tile Hooks

Part Number	Description
4000034	Flat Tile Hook Set, w/Lags
4001294	Tile Hook 3S Wide Base w/Hardware
4000140	Universtal Standard Hook 9" Base Kit
4000141	Flat Tile Hook X, Kit
4000142	Universal Standard Hook +2, 5.5" Base, Kit



Standing Seam PowerClamps

Part Number	Description
4000016	Standing Seam PowerClamp, Mini, Set
4000017	Standing Seam PowerClamp, Standard, Set



Corrugated Power Clamp, Kit

Part Number	Description
4000307	Corrugated PowerClamp, Kit



Trapezoidal Power Clamp, Kit

Part Number	Description
4000308	Trapezoidal PowerClamp, Kit



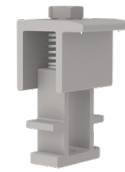
Yeti Clamp

Part Number	Description
4000050-H	Yeti Hidden EC for CR, 13mm Hex Set



K2 Mid Clamp

Part Number	Description
4000229	K2 Mid Clamp Set, M8×40, Dark
4000230	K2 Mid Clamp Set, M8×40, Mill



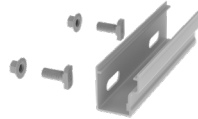
K2 End Clamp

Part Number	Description
4000197	K2 End Clamp Set, Mill
4000233	K2 End Clamp Set, Dark



Bonding & Grounding

Part Number	Description
4000629-H	CR Microinverter & Opt, 13mm Hex Kit
4000006-H	Everest Ground Lug, 13mm Hex
4000083	MLPE, Module Frame Mount, Kit



CrossRail Rail Connector

Part Number	Description
4000051	Rail Connector CR 44-X, Set, Mill
4000052	Rail Connector CR 44-X, Set, Dark
4000385	RailConn CR48-X,48-XL Struct Set, Mill
4000386	RailConn CR48-X,48-XL Struct Set, Dark
4001196	Rail Connector UL 2703 Set, CR80, Mill



End Caps

Part Number	Description
4000176	EndCap 44-X, K2
4000431	CrossRail Flat EndCap, CR 48-X, 48-XL
4001221	EndCap, Black, CR80



Wire Management

Part Number	Description
4000069	Wire Management Clip, TC
4000382	HEYClip SunRunner Cable Slip SS, S6404
4005394	Wire Mangement Clip, Omega, Black

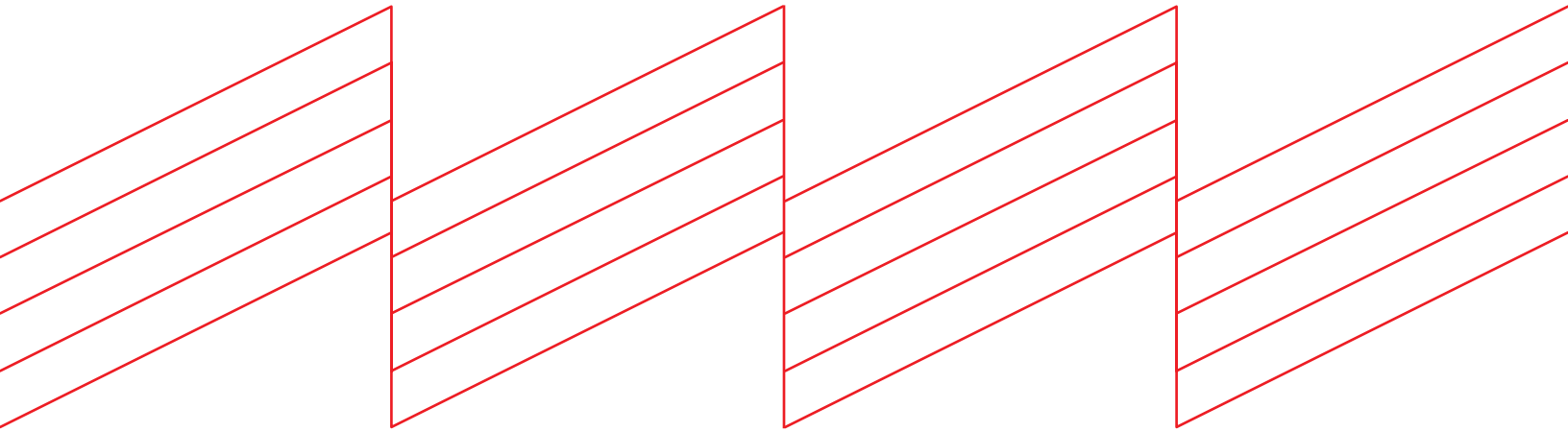


CR 48-X/48-XL Sleeve

Part Number	Description
4000177	Sleeve CR 44-X
4000583	CrosRail 3" Black Sleeve 48-X, 48-XL



Connecting Strength



K2 Systems, LLC

4665 North Ave. Suite I • Oceanside, CA 92056 •
USA +1.760.301.5300 • infous@k2-systems.com
www.k2-systems.com

CrossRail System Data Sheet V1 | 1122 • Subject to change
Product illustrations are exemplary and may differ from the original.