

THE INDUSTRY STANDARD

for Pest Abatement, Protection and Beautification
of Residential Solar Systems



Beautify your system. Protect your investment.

Complete Your System

Your product is perfect. Your design is perfect. Your installation is perfect.
So why is the solar system still incomplete?

The exposed areas under installed solar arrays are **open doors to pests and debris**, which can cause a lot of problems. Not only that, those openings are unsightly and make the system look unfinished.

By using a **strong, durable and attractive** barrier, you can both beautify each system you install and protect it from uninvited guests.

Threats to Solar Systems



SQUIRRELS

Did you know that a squirrel's teeth never stop growing? That's why they feel the urge to chew constantly. The space under your panels not only provides them shelter, it provides them with a lot of chewy wire casings to enjoy. Frayed, damaged wiring will harm your system and can be a significant fire hazard.



BIRDS

Birds like shelter and protection from predators, and the area under panels is a perfect place for them to build their nests. Good for them, but bad for homeowners. If their noise doesn't bother you, their feces will. Bird droppings are acidic and can erode building materials, while they also carry any of 60 transmittable diseases.



LEAVES AND DEBRIS

If the critters don't find the space under your solar, leaves sure can. An accumulation of leaves and debris underneath panels can damage the roofing and promote roof rot.



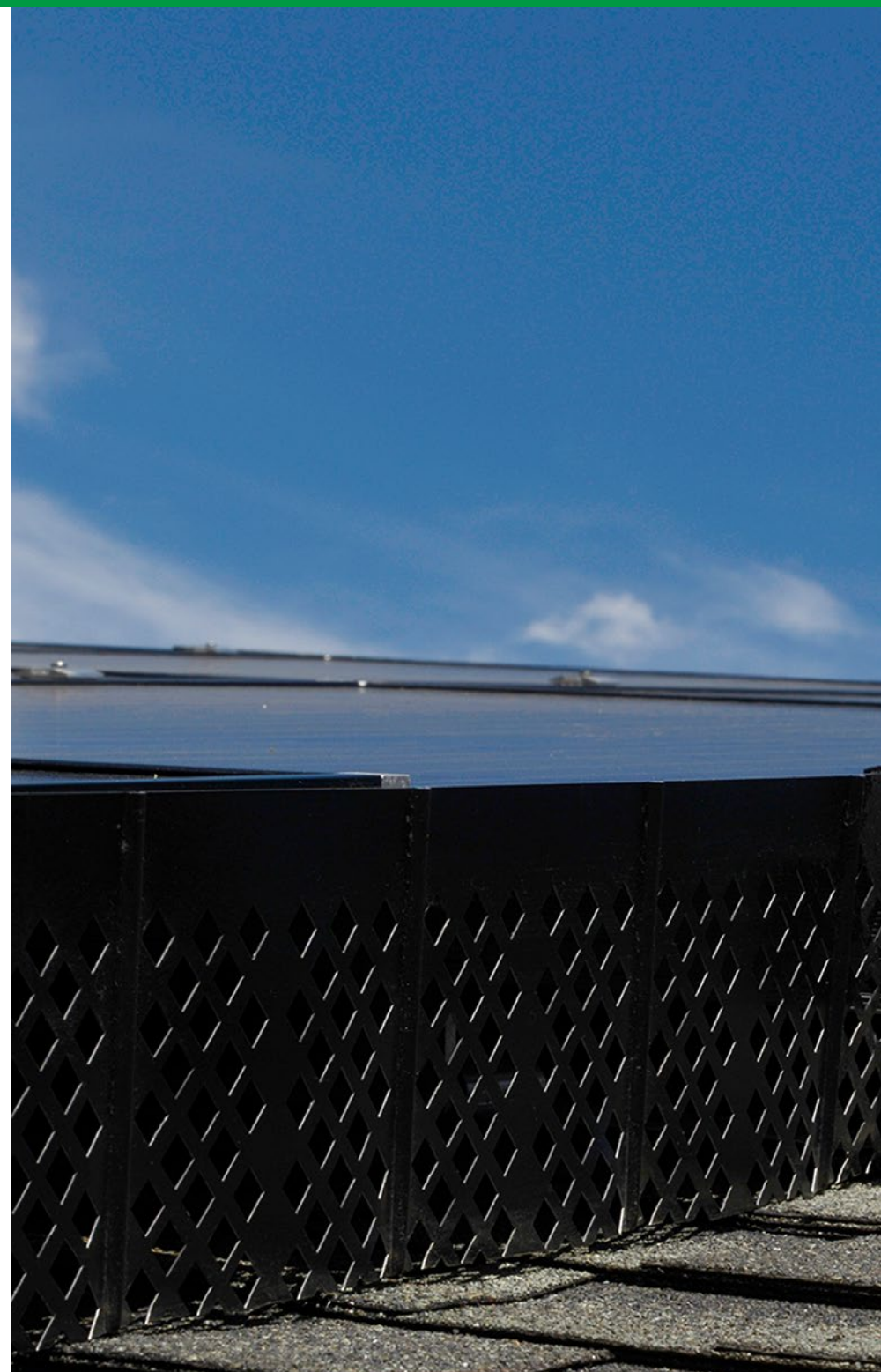
What To Look For

Here are a few things to look for when considering a protective barrier:

- 1 STRENGTH**
Squirrels can chew through most anything. Find a barrier that's tougher than they are.
- 2 AESTHETICS**
Homeowners care about the appearance of their homes. The barriers you choose should add curb appeal, not detract from it.
- 3 SIMPLICITY**
You have enough to think about. Make sure your product is easy to install.
- 4 VERSATILITY**
When it comes to roofs, one size does not fit all. Use a barrier than can easily adapt to different styles and types of roofing materials.
- 5 DURABILITY**
Your barrier should last as long as your system, with no rust or discoloration. Protect your array from the elements, as well as pests.
- 6 WARRANTY FRIENDLY**
Make sure your barrier doesn't require screws, fasteners or other potentially damaging material, as this may void the manufacturer's warranty.

One barrier provides you and homeowners all of these benefits:

SOLATRIM



SolaTrim Protective Residential Solar Barriers

PROTECTING YOUR SYSTEM NEVER LOOKED THIS GOOD.

The SolaTrim All-Climate Protective Barriers is designed and built with strength and aesthetics in mind. Affordable and dependable, this barrier is designed to protect your investment for the life of the system.

SolaTrim Benefits

From amazing looks to easy installation to powerful protection, SolaTrim has everything you and your customers need.

STUNNING

The clean and practical airflow design improves a home's curb appeal, compared to ugly, wire-cage products.

SIMPLE

It's easy to install, with no need for clips, clamps or screws is due to our patented "peel-and-stick" process.

STRONG

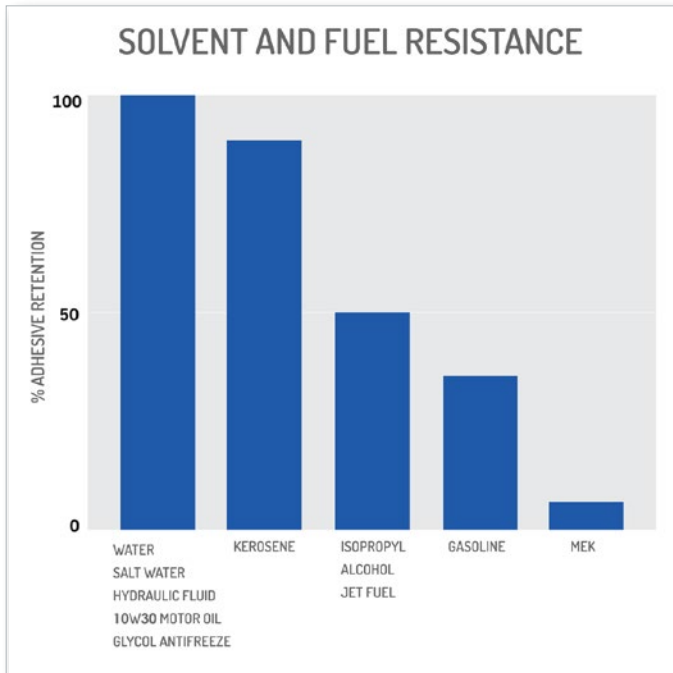
It's coated, reinforced aluminum body is immune to rust or discoloration, and the proven adhesive was developed to stay on for the life of the system.



Adhesive Data

Modern adhesive technology has come a long way. The adhesive used in our patented “peel & stick” acrylic foam tape is the same that’s used to attach wing-flap extensions to commercial airplanes and to construct orbiting satellites. In other words, it’s not coming off—even under extreme conditions.

It is an improvement over single-point, mechanical fasteners and its pressure-activated adhesion allows for immediate handling strength to speed assembly.



TYPICAL PHYSICAL PROPERTIES

PROPERTIES		TYPICAL VALUES
COLOR		DARK GRAY
THICKNESS	INCHES (MM)	0.045 (1.1)
	TOLERANCE	+/- 10%
ADHESIVE TYPE		GENERAL PURPOSE ACRYLIC
FOAM TYPE		FIRM CLOSED CELL
DENSITY lb/ft ³ (kg/m ³)		52 (840)
RELEASE LINER THICKNESS	TYPE	PE FILM
	INCHES (MM)	0.005 (0.125)
	COLOR	RED

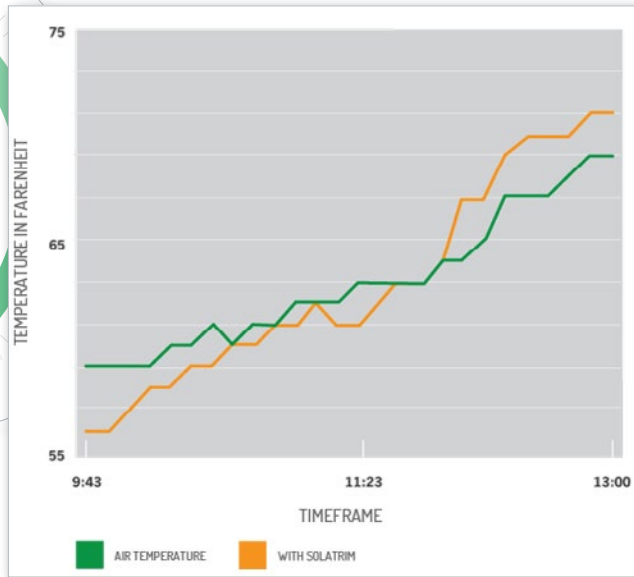
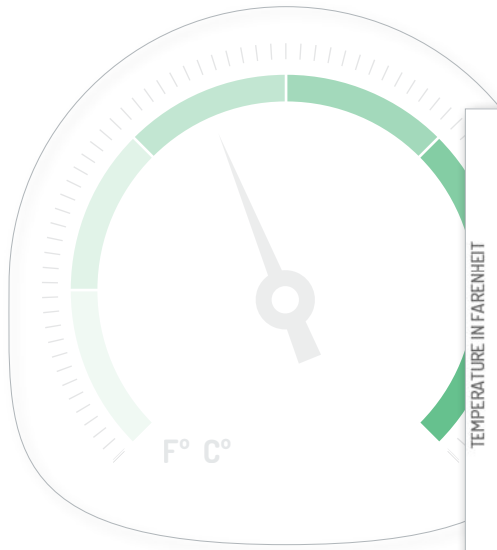
Ideal application temperature range is 10°C to 40°C (50°F to 105°F). Minimum suggested application temperatures to 10°C (50°F). To obtain good performance, surfaces should be dry and free of condensed moisture.

TEMPERATURE TOLERANCE	LOW	HIGH
SHORT TERM (MINUTES, HOURS)	-22°F / -30°C	450°F / 232°C
LONG TERM (DAYS, WEEKS)	-40°F / -40°C	300°F / 149°C

Sub-Array Temperatures

SolaTrim was engineered to allow for air exchange under the solar panel array, keeping the system ventilated while blocking pests and debris. As part of SolaTrim's product testing, we measured the effect SolaTrim had on backside module temperatures.

As these results indicate, SolaTrim doesn't cause a significant warming effect, and the air exchange is sufficient to prevent temperature variance when the solar array perimeter is wrapped with SolaTrim's Protective Barrier.



TIME	AMBIENT AIR TEMPERATURE	ENCLOSED WITH SOLATRIM	DIFFERENCE	DIFFERENCE PERCENTAGE
9:43	59°	56°	-3°	-5.08%
9:47	59°	56°	-3°	-5.08%
9:52	59°	57°	-2°	-3.39%
9:56	59°	58°	-1°	-1.69%
9:57	60°	58°	-2°	-3.33%
10:05	60°	59°	-1°	-1.67%
10:06	61°	59°	-2°	-3.28%
10:12	60°	60°	0°	00.0%
10:28	61°	60°	-1°	-1.64%
10:37	61°	61°	0°	00.0%
10:42	62°	61°	-1°	-1.64%
10:51	62°	62°	0°	00.0%
11:18	62°	61°	-1°	-1.61%
11:23	63°	61°	-2°	-3.17%
11:36	63°	62°	-1°	-1.59%
11:42	63°	63°	0°	00.0%
11:50	63°	63°	0°	00.0%
12:06	64°	64°	0°	00.0%
12:06	64°	67°	3°	-4.69%
12:10	65°	67°	2°	+3.08%
12:22	67°	69°	2°	+2.99%
12:30	67°	70°	3°	+4.48%
12:41	67°	70°	3°	+4.48%
12:48	68°	70°	2°	+2.94%
12:50	69°	71°	2°	+2.90%
13:00	69°	71°	2°	+2.90%

AVERAGE: 0° AND -0.18%

Features and Specifications

FEATURES

- Rust and corrosion resistant 3003-H14 Aluminum panel
- Black polyester coating for low-visibility, matching module backing
- Backside primer coat (standard gray)
- .024" Aluminum stock – stiffened by design to prevent barrier from bending or warping
- Diamond stamping to allow for air-flow and temperature regularity
- Acrylic foam tape backing for long-term adhesion to any module frame configuration

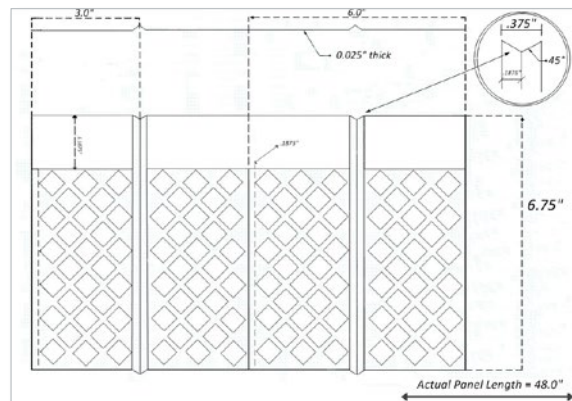
ST-001 SPECIFICATIONS

Dimensions	6.75" x 48.00"
Weight	0.68 lbs.
Finish	Black Polyester Coating
Warranty	2 years

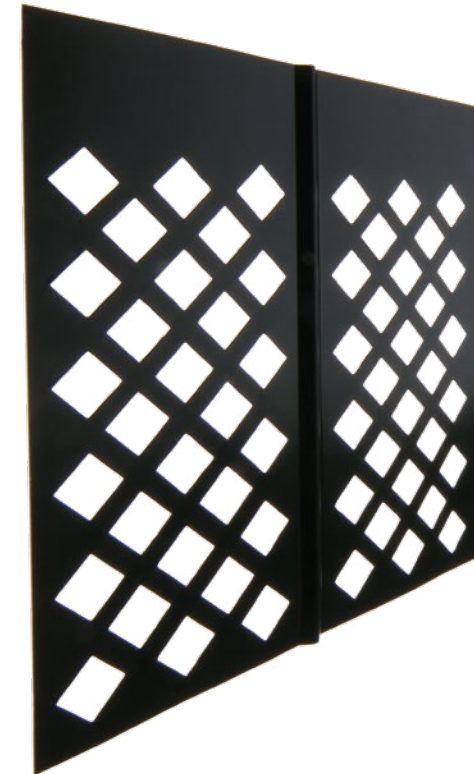
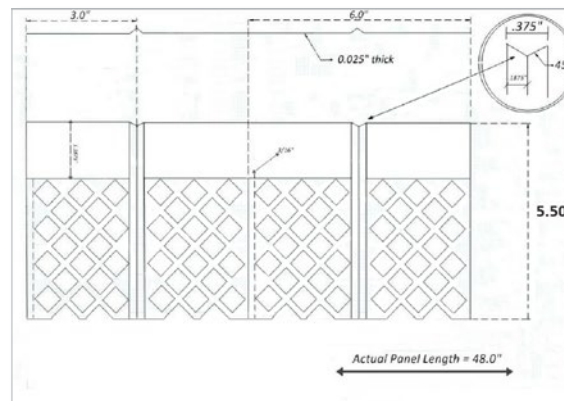
ST-055 SPECIFICATIONS

Dimensions	5.50" x 48.00"
Weight	0.55 lbs.
Finish	Black Polyester Coating
Warranty	2 years

PRODUCT DIMENSIONS



PRODUCT DIMENSIONS



We'd Like to Help Boost Your Business!

SolaTrim offers your company a distinct advantage when it comes to making the solar sale. We've designed our system to offer your customers lifetime protection from birds, rodents and other environmental threats, while beautifying their system.

But we also designed our product to boost your business. Here's how:

● INCREASE YOUR CLOSING PERCENTAGES

Imagine putting photographs of our barriers in your sales presentation. You can, and it will show how we add curb appeal to every home. Your customers will appreciate the fact that we offer lifetime protection for their investment, which will help you stand apart from your competition.

● IMPROVE YOUR PROFIT MARGINS

You can realize as much as a \$.20 per watt benefit, while providing you with a high-value upsell to your customers.

● BOOST YOUR REFERRAL RATES:

A happy customer is always your goal, and satisfied customers provide the best referrals you can get. The biggest problem with solar arrays is environmental issues, which we help to eliminate. Once you show that you have the problem contained, the referrals to friends and family will start piling up.

● SLASH YOUR O&M COSTS

The biggest dent in your profits is ongoing O&M costs. With SolaTrim, there are no more damage or clean up problems to take care of. No more debris removal. No more Truck Rolls for non-component related problems. You'll save a lot of money on your O&M costs, while gaining happier customers!





Beautify your system. Protect your investment.

SolaTrim provides residential solar consumers with affordable, attractive and dependable products that will protect and beautify their renewable energy investment for decades to come.

It is our goal to develop and manufacture innovative, Made-in-USA solar aftermarket products that support America's solar initiative.

SOLATRIM.COM • INFO@SOLATRIM.COM

SolaTrim, LCC
Sacramento, CA

Share this eBook

