

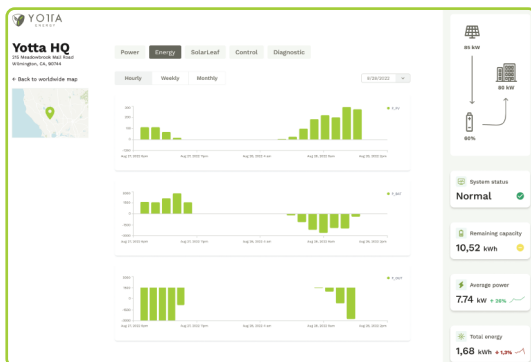


Yotta's **SolarLEAF (SL-1000)** is a fully-integrated **energy storage technology** that seamlessly integrates **behind** photovoltaic (PV) modules on **commercial rooftops** which solves one of the industry's biggest challenges of **"Where do you put the batteries?"**. Engineered with an advanced **passive thermal regulation** technology, SolarLEAF™ safely enables a distributed format while maximizing the **life and performance** of the battery under extreme thermal **conditions**.

The **SolarLEAF's** modular design is able to **scale** to meet the changing needs of **commercial buildings** while optimizing for today's needs. With its **plug-and-play design** and direct integration with Yotta's Dual Power Inverters, **deployment** of the technology is a **breeze**.



- Best in **class fire safety**
- Plug-and-play** for simplified deployment
- Low Voltage** DC architecture (<60V)
- Single phase or 3-phase** (208V or 480V) options
- Engineered for **high-capacity** PV modules
- Light-weight** design for ease of handling during installation
- High efficiency **DC-coupled architecture** delivers more savings
- Modular design** that can expand to meet the changing needs of buildings Solid-State Design means no annual maintenance required.



YottaVision Monitoring

- **Monitors** and **Analyzes** each solar module and battery
- Allows **Remote Access** to the solar array
- Displays **Performance Issues** and **Alerts** the user to events
- **Real Time Communication**
- **Performance Reporting** to support troubleshooting

SL-1000 Data Sheet

Model	SL-1000
Electrical	
Solar PV Input	Up to 750W
Module Compatibility	60-72 Cell PV modules Voc(max) 60V - Isc(max) 15A
Inverter Compatibility	Yotta DPI Microinverter
DC Voltage - Nominal	38.4V
Amp Hours	26.4Ah
Rated Capacity	1000Wh @ (100% DoD) 800Wh @ (80% DoD)
Allowable Depth of Discharge (DoD) (1)	Up to 100%
Voltage Range (1)	22V to 45V
Max. Continuous Voltage (charge & discharge)	59.9V
Max Continuous Current (charge & discharge)	15A
Max Power Output (2) (discharge)	Up to 675W
Chemistry	Lithium Iron Phosphate
Cycle Life	6,000+ Cycles (@ 80% DoD)
Mechanical	
Weight	56.7lbs / 25.7kg
Roof Loading	2.7 / 3.0 psf typical
Mounting Options	Attaches to PV or ballast racking
Ambient Op. Temp.	-20° to 43°C max continuous (-4° to 109°F)
Storage Temp.	-20° to 55°C (-4° to 114°F)
Dimensions	15.75 x 26.25 x 4.25 (in) 400 x 667 x 108 (mm)
Safety and Warranty	
Warranty	10 yrs.
Enclosure	NEMA 4X, IP 67
Certification	UL1973 UL9540 (Pending) UN38.3
Monitoring	YottaVision
Safety	Meets the Performance Criteria of UL1973 (Approved), UL9540A and UL9540 (Pending)

(1) Maximum operating ranges. Refer to warranty for recommended conditions.

(2) From battery, but further limited by solar inverter.

