



### Trust your system at every angle.

The IronRidge Tilt Mount System supports a wide range of solar module tilting angles, while also resisting the extreme wind and snow forces experienced over a building's lifetime.

Every component has been carefully engineered and rigorously tested, and the entire system uses only aluminum and stainless steel materials to resist corrosion.



#### **Roof Friendly**

Lightweight and compatible with industry-standard attachments.



#### **PE Certified**

Pre-stamped engineering letters available in most states.



#### **Strength Tested**

All components evaluated for superior structural performance.



#### **Design Assistant**

Online software makes it simple to create, share, and price projects.



#### **UL 2703 Listed System**

Meets newest effective UL 2703 standard.

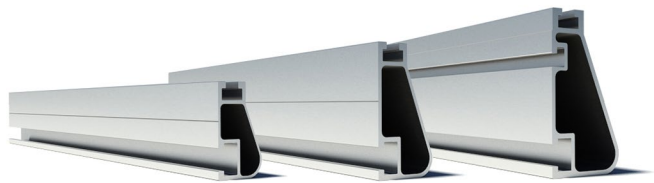


#### **25-Year Warranty**

Products guaranteed to be free of impairing defects.

## XR Rails & Tilt Legs

### XR Rails



Attach directly to Tilt Legs. Available in three targeted sizes to support specific wind and snow loads.

- Unique curved profile
- Spanning capabilities up to 12'
- Clear and black finish

### Tilt Legs ☼



Tilt assembly to desired angle, up to 30 degrees. Kits include South and North Tilt Leg and all hardware.

- Available in multiple lengths for a wide angle range
- Assembled South Tilt Legs include angle indicators
- Legs are electrically bonded to rails

## Grounding Clamps

### UFOs ☼



Universal Fastening Objects secure and bond modules to rails.

- Fully assembled and lubricated
- Single, universal size
- Clear and black finish

### Stopper Sleeves ☼



Snap onto the UFO to transform into a bonded end clamp.

- Bonds modules to rails
- Sized to match modules
- Clear and black finish

### CAMO ☼



Bond modules to rails while staying completely hidden.

- Universal end-cam clamp
- Tool-less installation
- Fully assembled

## Accessories

### BOSS™ Bonded Splices ☼



Bonded Structural Splices connect and bond XR Rails together.

- Integrated bonding
- No tools or hardware
- Self-centering stop tab

### Grounding Lugs ☼



Connects Tilt Mount system to equipment ground.

- Low profile
- Single tool installation
- Mounts in any direction

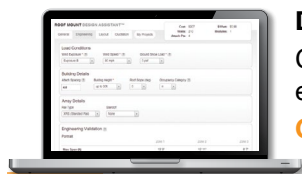
### Ends Caps & Wire Clips



Provide a finished look and organize electrical wires.

- Simple snap-in installations
- Clips hold up to ten 5mm wires
- UV-stabilized polymer

## Resources



### Design Assistant

Go from rough layout to fully engineered system. For free.

[Go to IronRidge.com/design](https://IronRidge.com/design)



### NABCEP Certified Training

Earn free continuing education credits, while learning more about our systems.

[Go to IronRidge.com/training](https://IronRidge.com/training)