

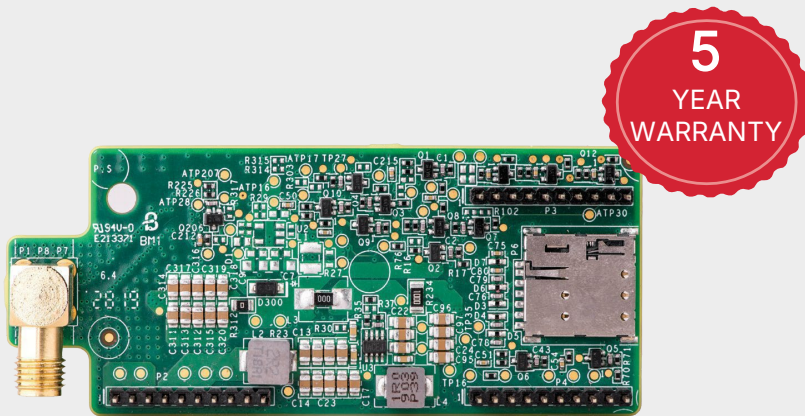
# Cellular Plug-in with Data Plan for the US

For Residential Systems:

CELL-B-R05-US-S-S2

For Commercial Systems:

CELL-B-R05-US-T-S6



## Cellular Internet Connectivity Kit for Commercial and Residential Installations

- / Can be used for TerraMax, Commercial Inverters, as well as SolarEdge ONE Manager applications
- / Supports high bandwidth monitoring of inverters, optimizers, EV chargers, batteries, meters and weather stations
- / One kit is needed per inverter leader/SolarEdge ONE Manager.
- / Enables remote analysis and troubleshooting
- / Connect SolarEdge inverters wirelessly to the internet
- / 5-year-year data plan is included
- / No need for internet infrastructure at site
- / Comprehensive coverage in the US
- / Installed within the inverter enclosure for outdoor resilience

# / Cellular Plug-in with Data Plan for the US

CELL-B-R05-US-S-S2,  
CELL-B-R05-US-T-S6

COMPATIBLE INVERTERS (With SolarEdge Go Configuration)		Cell-B-R05-US-S2 SEXxxx-XXXXBXX4	CELL-B-R05-US-T-S6 SExxxK-xxxIxxx4 USE-SIN-USxxxIxxSx SE-TRI-USxxxIxxS4 SExxxK-USxxxxNAX	UNIT	
Monitoring	Continuous connection with 5-minute telemetry from all connected inverters				
Supported Residential Systems (CELL-B-R05-xx-S-S2)	Residential systems: 1 inverter, up to 45 power optimizers, and 1 meter Residential StorEdge systems: 1 inverter connected, up to 30 power optimizers, 2 batteries and 1 meter				
Supported Power of Commercial Systems	All standard commercial power ratings. (for CELL-B-R05-xx-x-S6)			KW AC	
Number of Monitored Inverters with a single Cellular Plug-in	Commercial: Up to 32 inverters, limited by the system AC size <sup>(2)</sup> Residential: 1 inverter				
Data Plan Duration	5 years prepaid plan				
Model Number <sup>(3)</sup>	CELL-B1 / CELL B3				
RF PERFORMANCE		OPERATING FREQUENCY			
LTE Cat M1 FDD	Band/ Freq (MHz)	Modern Transmit / Modern received			
	2100 (B1)	1920-1980 / 2110-2170		MHz	
	1900 (B2)	1850-1910 / 1930-1990		MHz	
	1800 (B3)	1710-1785 / 1805-1880		MHz	
	1700 (B4)	1710-1755 / 2110-2155		MHz	
	850 (B5)	824-849 / 869-894		MHz	
	900 (B8)	880-915 / 925-960		MHz	
	700 (B12)	699-716 / 729-746		MHz	
	700 (B13)	777-787 / 746-756		MHz	
	850 (B18)	815-830 / 860-875		MHz	
	850 (B19)	830-845 / 875-890		MHz	
	800 (B20)	832-862 / 791-821		MHz	
	1900 (B25)	1850-1915 / 1930-1995		MHz	
	850 (B26)	814-849 / 859-894		MHz	
	700 (B28)	703-748 / 758-803		MHz	
	1900 (B39)	1880 / 1920		MHz	
Bandwidth	1.4, 3, 5 <sup>(4)</sup>			MHz	
Maximum Transmit Power	23			dBm	
Receiver Input Sensitivity (CE Mode A)	-107			dBm	
Modulation	Downlink: QPSK\16QAM\64QAM, Uplink: QPSK\16QAM				
ANTENNA					
Dual Antenna Bands	824-960		1710-2170		MHz
Antenna Type	Outdoor				
Antenna Connector	RP-SMA or N plug <sup>(5)</sup>				
VSWR	≤4.0				
Gain	2				dBi
Polarization	Vertical				
Material	PC Lexan 503R-WH5151L or WH8G952 Sabic				
Dimensions (Length x Diameter)	7.87 x 0.78 / 200 x 20			in / mm	
Antenna Cable length	CELL-B-R05-xx-S-Sx	52 / 130		in / mm	
	CELL-B-R05-xx-T-Sx <sup>(6)</sup>	71 / 180			
STANDARD COMPLIANCE					
EMC and Radio	FCC parts 15, 22, 24 class B; Industry Canada (IC):ICS-003, RSS-102 AS/CA S042.4 Requirements for connection to an airinterface of a Telecommunications Network Part 4: IMT Customer Equipment				
Safety cUL, UL60950	cUL, UL60950				
RoHS	Yes				
INSTALLATION SPECIFICATIONS					
Dimensions (L x W x H)	3.07 x 1.27 x 0.56 / 78.2 x 32.5 x 14.2			in / mm	
Operating Temperature	-40 to +85 / -40 to +185			°C / °F	
Mounting	Built into the inverter or purchased separately				
Power consumption	0.85 (@23 dBm output power)			W	
SIM CARD HOLDER					
Type	Nano Sim				

\* Information concerning the Data Plan's terms & conditions is available in the following link: <https://www.solaredge.com/sites/default/files/se-communication-plan-terms-and-conditions-eng.pdf>

(1) Customer is responsible for verifying that the site location has adequate mobile coverage by the third party service provider prior to any installation by accessing the following link for US: <https://www.solaredge.com/us/products/communication/cellular-communication-options/#/> select the CAT M1 option.

(2) For larger systems, use multiple cellular plug-ins

(3) Two types of modems can be used interchangeably

(4) Exact value depends on actual operating band

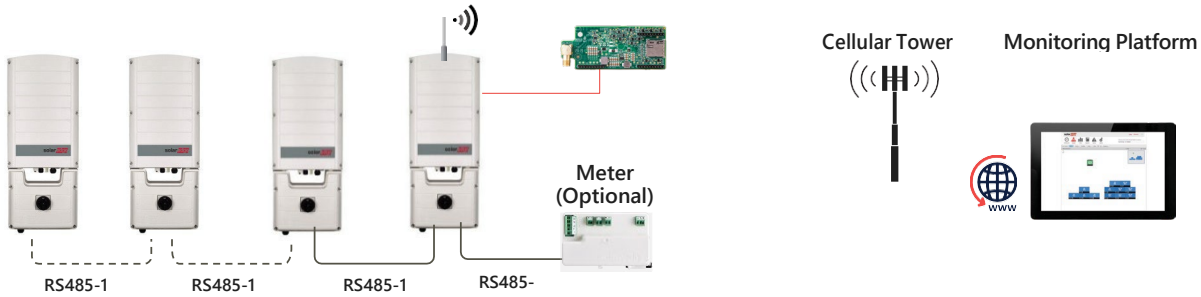
(5) Two types of antennas may be supplied interchangeably

(6) Long antenna cable should be used with Three Phase Synergy Technology Inverter up to 120kW

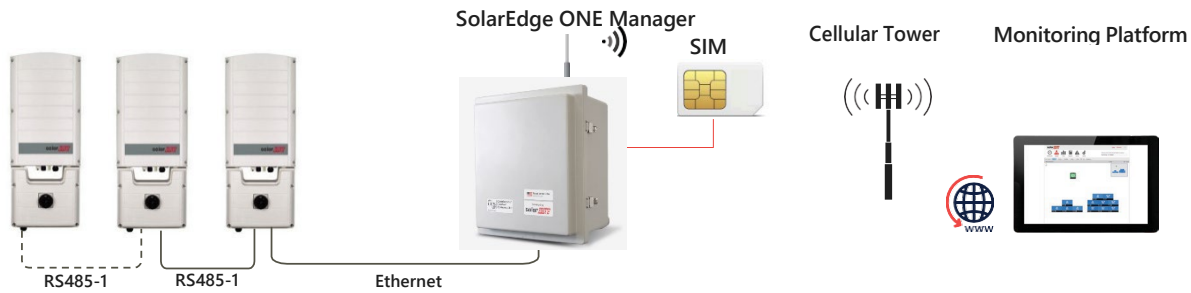
# / Cellular Plug-in with Data Plan for the US

CELL-B-R05-US-S-S2,  
CELL-B-R05-US-T-S6

## Commercial Inverters connected without SolarEdge ONE Manager



## Commercial Inverters/ PV site connected via SolarEdge ONE Manager



## Single or multiple residential Inverters

