

DESCRIPTION:
**SNAPRACK, TDS, SPEEDSEAL CONDUIT
 MOUNT KIT**

DOC NUMBER:
 SNR-DC-01331

SnapNrack®

PART NUMBER(S):

242-05164, 242-05165

DRAWN BY:
 WULFEKOETTER

REV: **D** DATE:
 1/19/2023

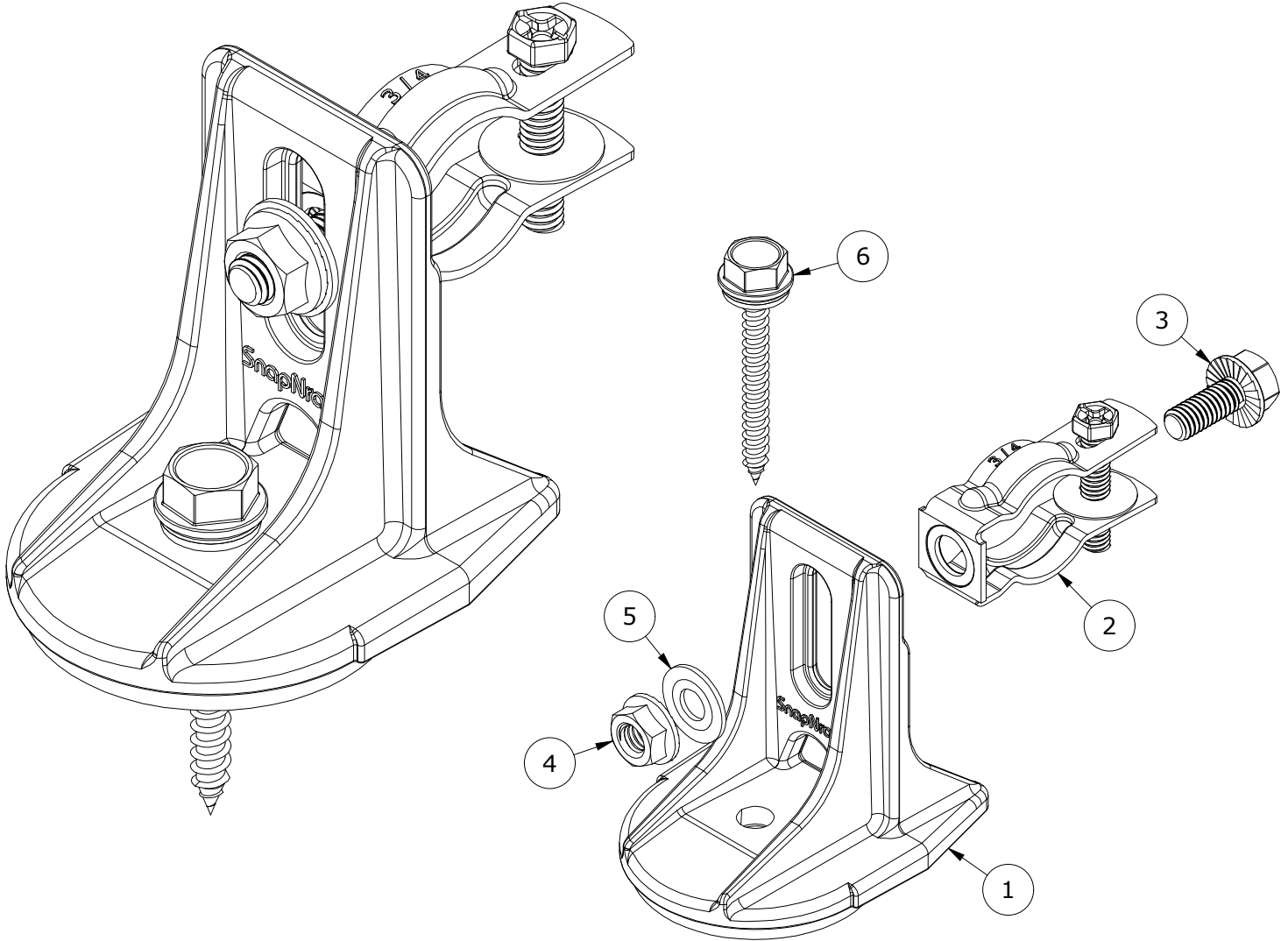
SUNRUN INSTALLATION SERVICES INC.

225 BUSH STREET, SUITE 1400 • SAN FRANCISCO, CA 94104 USA
 PHONE (877) 732-2860 • CONTACT@SNAPNRACK.COM

THE INFORMATION IN THIS DRAWING IS CONFIDENTIAL AND PROPRIETARY. ANY
 REPRODUCTION, DISCLOSURE, OR USE THEREOF IS PROHIBITED WITHOUT THE
 WRITTEN CONSENT OF SUNRUN SOUTH LLC.

UNITS: IN, LB, DEG [MM, KG, DEG]

SHEET: 1:2



PARTS LIST

ITEM	QTY	DESCRIPTION
1	1	SNAPNRACK, SPEEDSEAL FOOT, BASE, SEALING, SILVER
2	1	CONDUIT SUPPORT, RIGID-EMT, 3/8IN HOLE, HANGER-BOLT-NUTLESS, ZINC PLATED STEEL
3	1	BOLT, FLANGE, 5/16IN-18 X 3/4IN, CLEAR, SS
4	1	NUT, FLANGE, SERRATED, 5/16IN-18, SS
5	1	5/16IN X 3/4IN SS FLAT WASHER
6	1	SNAPNRACK, SEALING WASHER WOOD SCREW, #14 X 2-1/4IN, 1/2IN HEX HEAD, SS

MATERIALS: DIE CAST A380 ALUMINUM, ZINC PLATED STEEL, STAINLESS STEEL

DESIGN LOAD (LBS): N/A

ULTIMATE LOAD (LBS): N/A

TORQUE SPECIFICATION: 12 FT-LBS

CERTIFICATION: N/A

WEIGHT (LBS): 0.44-0.45

DESCRIPTION:
SNAPNRACK, TDS, SPEEDSEAL CONDUIT MOUNT
KIT

DOC NUMBER:
SNR-DC-01331

SnapNrack®

PART NUMBER(S):

242-05164, 242-05165

DRAWN BY:
WULFEOETTER

REV:

D

DATE:

1/19/2023

SUNRUN INSTALLATION SERVICES INC.

225 BUSH STREET, SUITE 1400 • SAN FRANCISCO, CA 94104 USA
PHONE (877) 732-2860 • CONTACT@SNAPNRACK.COM

THE INFORMATION IN THIS DRAWING IS CONFIDENTIAL AND PROPRIETARY. ANY
REPRODUCTION, DISCLOSURE, OR USE THEREOF IS PROHIBITED WITHOUT THE
WRITTEN CONSENT OF SUNRUN SOUTH LLC.

UNITS: IN, LB, DEG [MM, KG, DEG]

SHEET: 2:2

